



IDEAL DEGREE COLLEGE FOR WOMEN

DILSUKHNAGAR, HYDERABAD-60

**This is to certify the project work entitled
"CLAP SWITCH"
is done by**

NAME: KUNDARAPU SHIVA SINDHU

HALL TICKET NUMBER: 110421474012

GROUP: B.Sc MECs

This work has been carried out under my guidance.

M. Yellama
MENTOR



B. Adhulhan

PRINCIPAL

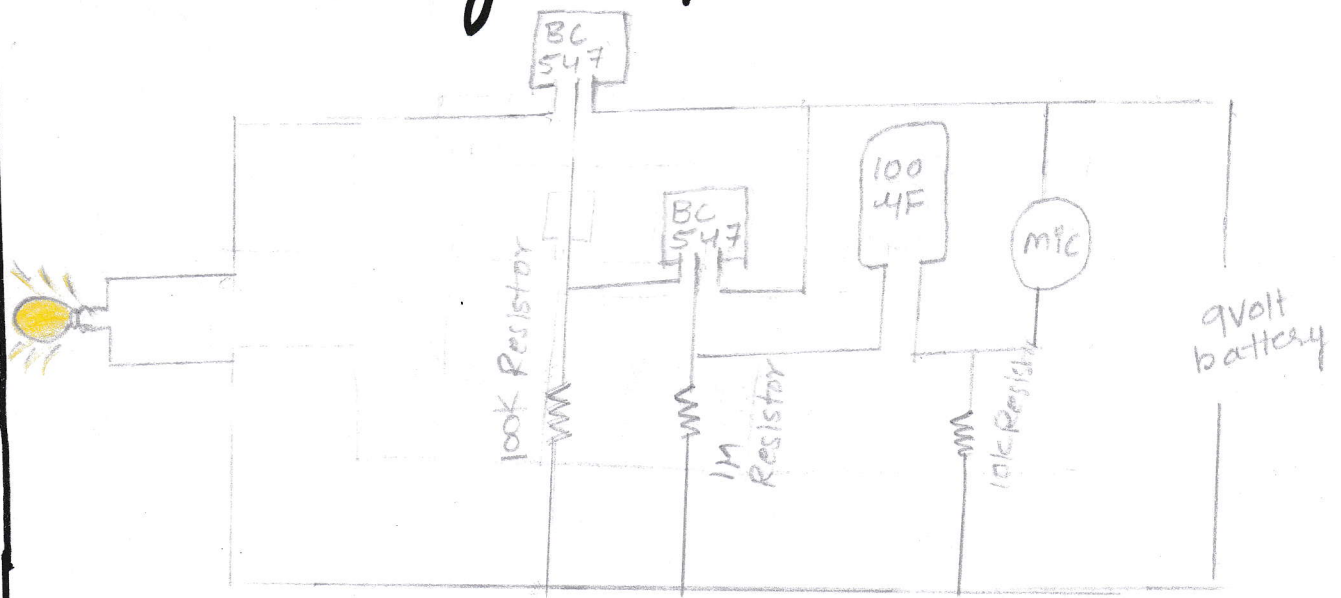
PRINCIPAL
Ideal Degree College for Women
Dilsukhnagar, Hyderabad-60

Title :- Clap switch ~~Experiment~~ PROJECT

Components Required :-

BC547 x 2 transistor, Mic, 10K Resistor
100K Resistor, 1M Resistor, 100 μ F Capacitor
9V Battery Cap, bulbLED, Battery 9V.

Circuit Diagram :-



Description :-

A Clap Switch circuit uses a microphone within the circuit to detect noises to turn the LED on.

* A Clap switch circuit can be used in homes and business to turn on things

* The two main applications are.

* Fans.

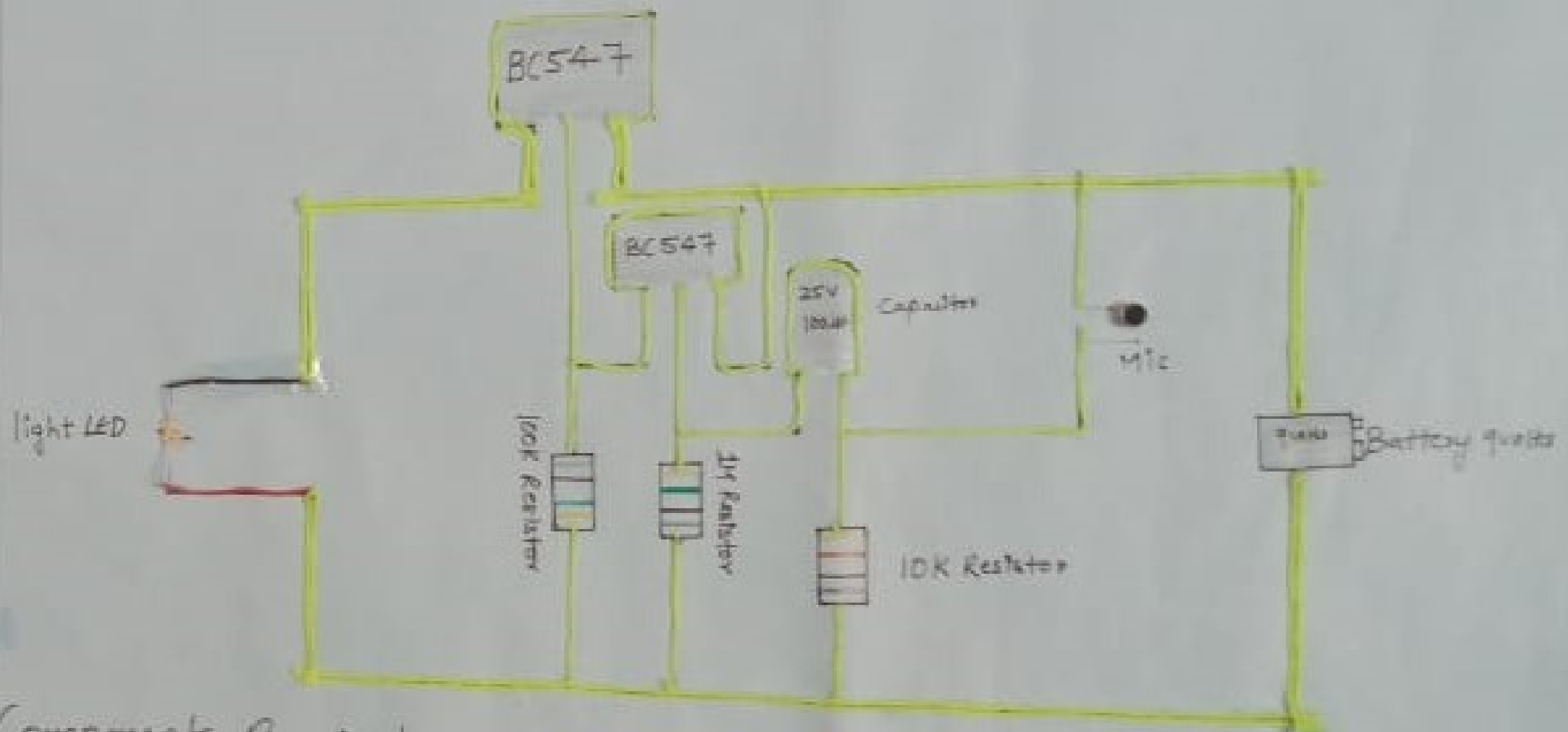
* Light.

Done by :-

1. M. Roja

2. K. Shivasindhu.

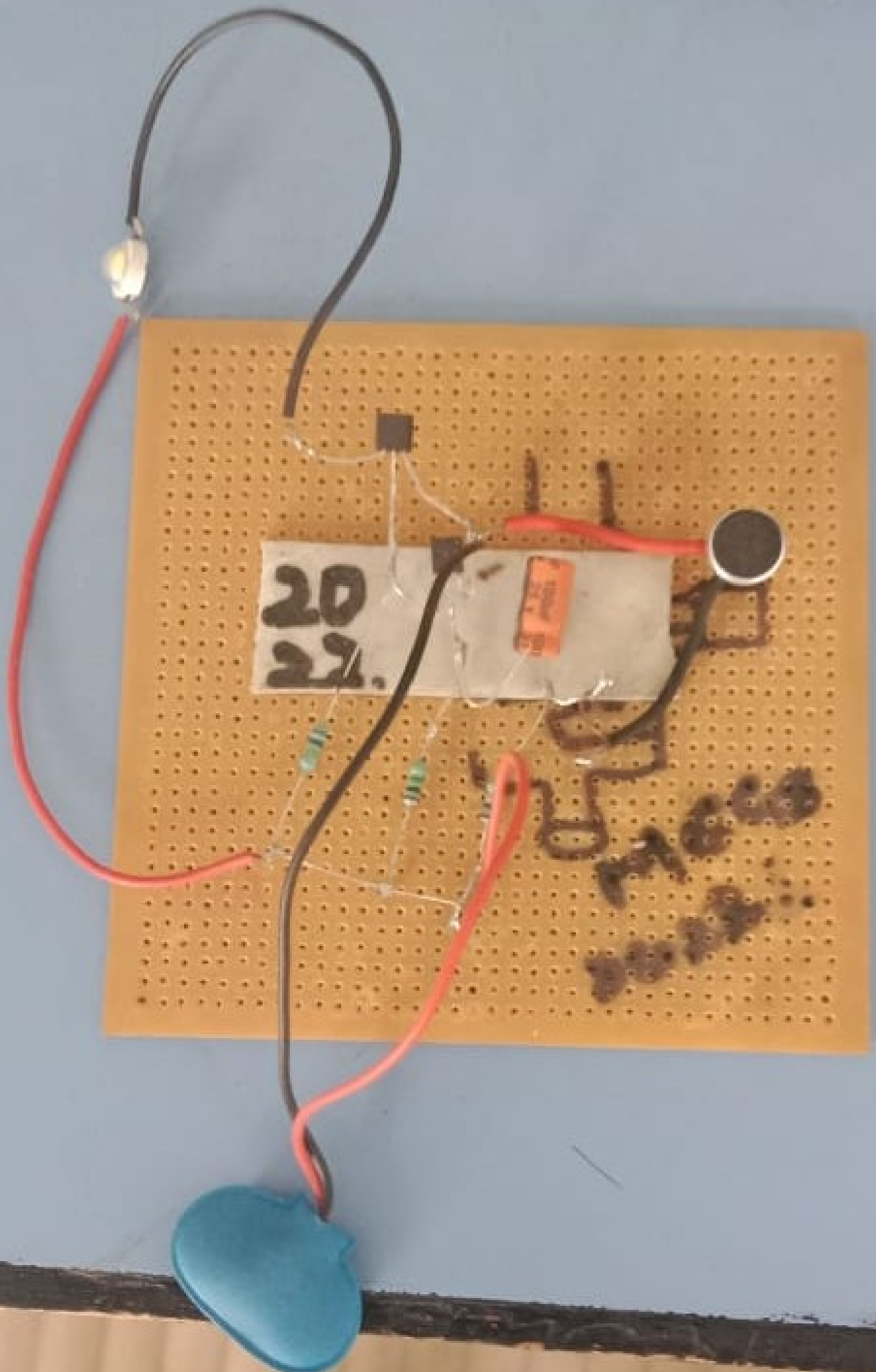
Sound clap switch Experiment



Components Required:-

- 1) BC547
- 2) Mic
- 3) 10K Resistor
- 4) 100K Resistor
- 5) 1M Resistor
- 6) 100MF Capacitor
- 7) Battery 9v
- 8) Bulb (LED)

Art by
Reja
Sindha



20
22

10k

100k